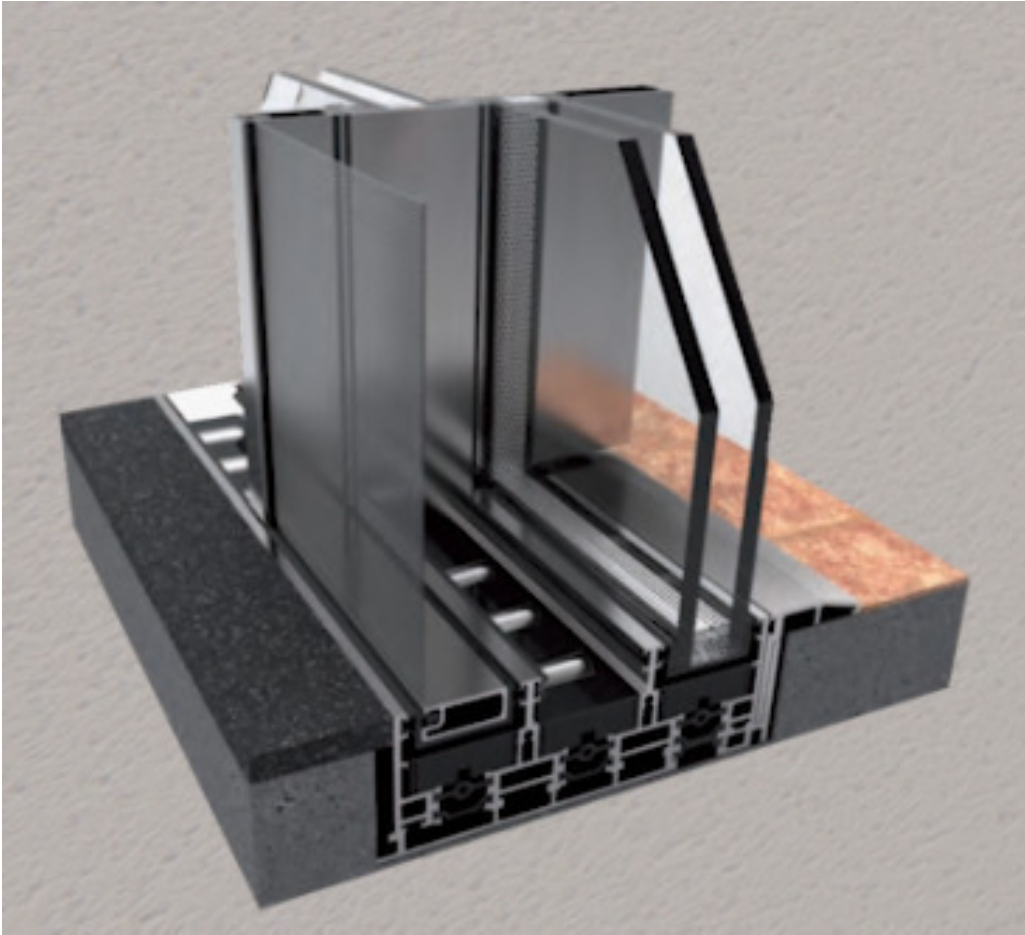


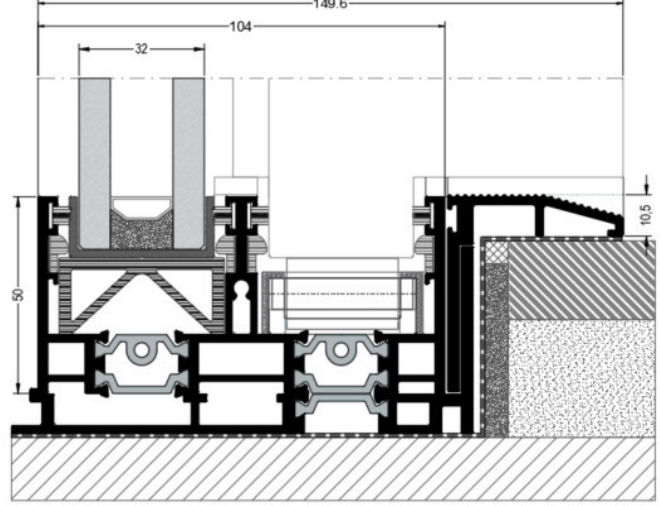
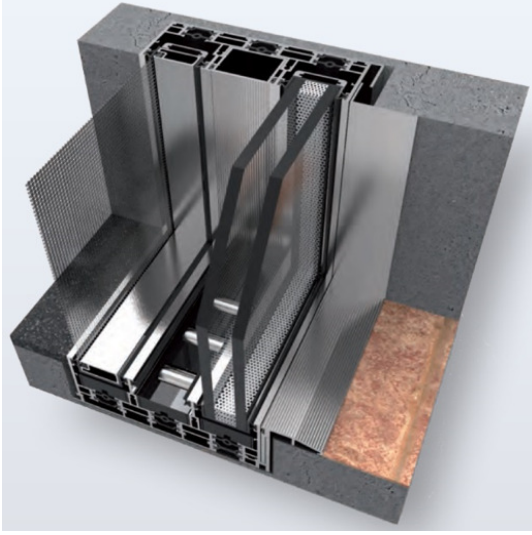
MİMARİ KATALOG
ARCHITECTURAL CATALOGUE

Alüminyum Kapı Pencere ve Giydirme Cephe Sistemleri
Aluminium Window Doors and Facade Systems

 **RESCARA**
elite



RESCF32

TEKNİK ÖZELLİKLER
TECHNICAL PROPERTIES**TEKNİK ÖZELLİKLERİ / TECHNICAL PROPERTIES**

KASA DERİNLİĞİ / FRAME DEPTH	104/155mm
MAX. CAM KALINLIĞI / MAX. GLASS THICKNESS	32mm
MAX. KANAT AĞIRLIĞI / MAX VENT WEIGHT.	600kg

PERFORMANS DEĞERLERİ / PERFORMANCE VALUES

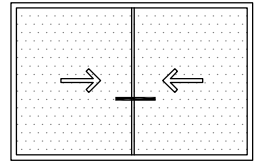
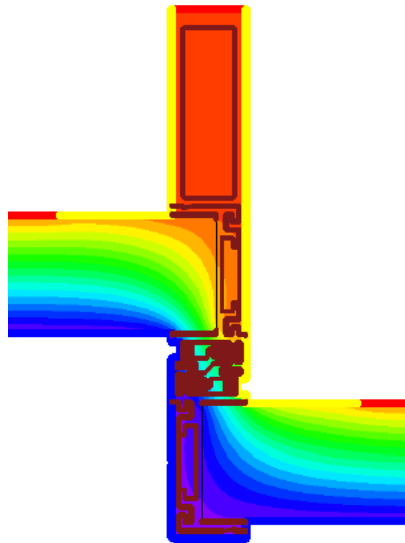
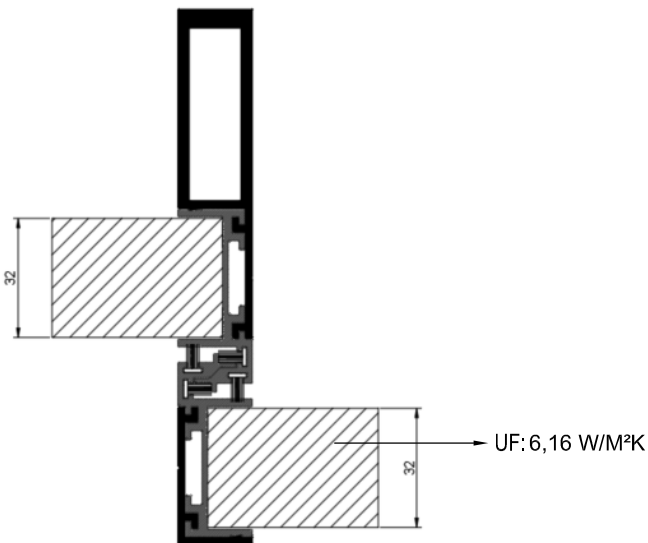
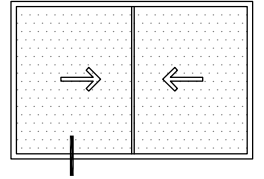
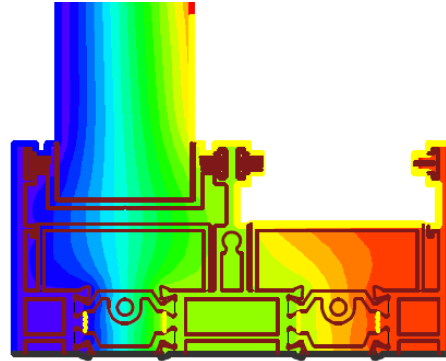
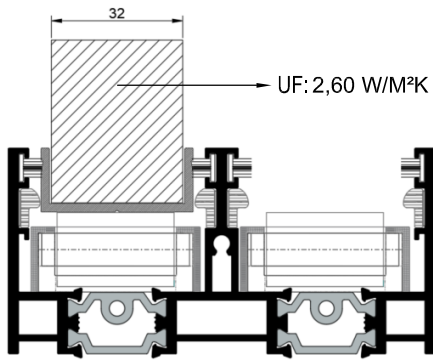
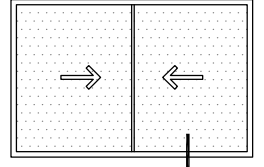
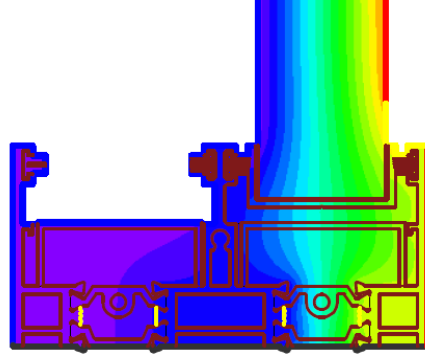
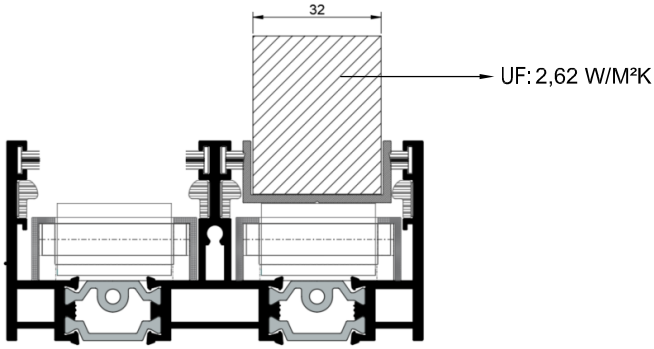
HAVA GEÇİRGENLİĞİ - EN 12207 (AIR PERMEABILITY)	1 (150 Pa)	2 (300 Pa)	3 (450 Pa)	4 (600 Pa)					
SU SIZDIRMAZLIĞI - EN 12208 (WATERTIGHTNESS)	2A (50 Pa)	3A (100 Pa)	4A (150 Pa)	5A (200 Pa)	6A (250 Pa)	7A (300 Pa)	8A (450 Pa)	9A (600 Pa)	E... (600+ Pa)
RÜZGAR YÜKÜNE DAYANIM - EN 12210 (RESISTANCE TO WIND LOAD)	1 (400 Pa)	2 (800 Pa)	3 (1200 Pa)	4 (1600 Pa)	5 (2000 Pa)	E... (2000+ Pa)			
SEHİM KRİTERİ - EN 12210 (DEFLECTION CRITERIA)	A (L/150)	B (L/200)	C (L/300)						
SİSTEM UF DEĞERİ - EN 10077-2 (THERMAL INSULATION VALUE)							2,60-6,16 W/M²K		

TEKNİK ÖZELLİKLER
TECHNICAL PROPERTIES

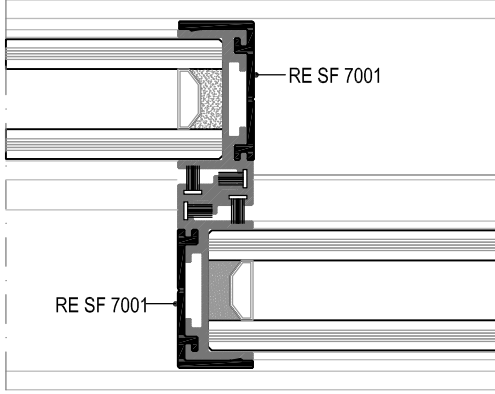
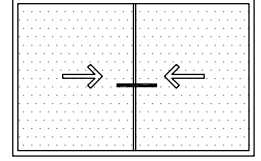
1. ALÜMİNYUM ALAŞIM / ALUMINIUM ALLOY	EN AW 6060 T66
2. MEKANİK ÖZELLİKLER / MECHANICAL PROPERTIES	EN 755-2
KOPMA AKMA MUKAVEMETİ / YIELD-FLOW STRENGTH	215 N/mm ² -60 N/ mm
UZAMA A50 / ELONGATION A50	%6 (min.)
SERTLİK / HARDNESS	70 HRB
3.ÖLÇÜ TOLERANSLARI / DIMENSIONAL TOLLERANCES	EN 12020- 2
4. ISI BARIYERİ / THERMAL INSULATION BARS	PA 66 GF 25
5.YÜZEY İŞLEMLER / SURFACE TREATMENT	
5.1 ELOKSAL / ANODIC OXIDATION	EN 17611 / QUALANOD
KALINLIK / THICKNESS OF ANODIC OXIDATION	15-20 MICRON EN ISO 2360
5.2 TOZ BOYA / POWDER COATING	QUALICOAT-SEASIDE
KALINLIK / THICKNESS OF POWDER COATING	MIN 60 MICRON
6. TÜM FİTİLLER / ALL GASKETS	EPDM / POLİPROPİLEN
<p>*SİSTEM İMALATINDA SADECE BU SİSTEM İÇİN TASARLANAN VE ÜRETİLEN ; SİSTEM KATALOĞUNDA İLAN EDİLEN FİTİLLER KULLANILMALIDIR. FARKLI FİTİL KULLANIMLARI İŞLEVSEL VE TASARIMSAL SORUNLARA SEBEP OLABİLİR.</p> <p>THE GASKETS USED DURING ASSEMBLING AND INSTALLING THE COMPONENTS SHOULD BE ONLY THE ONES CREATED FOR THIS SYSTEM AND DISPLYED IN THIS PRODUCT CATALOGUE. THE USE OF OTHER GASKETS OR/AND BRUSHES IT MAY CAUSE FUNCTIONAL AND DESIGN PROBLEMS.</p>	
7. AKSESUARLAR / ACCESSORIES	
<p>*İMALATTA KULLANILAN TÜM AKSESUARLAR SİSTEMİN YÜKSEK PERFORMANS İLE ÇALIŞABİLMESİ İÇİN SADECE BU SİSTEME ÖZEL OLARAK TASARLANMIŞTIR. KATALOGDA İLAN EDİLENDEN FARKLI AKSESUAR KULLANIMLARI SİSTEMİN DOĞRU ÇALIŞMASINI ENGELLEYEBİLİR.</p> <p>ALL THE ACCESSORIES USED FOR THE MANUFACTURING, MOUNTING, FUNCTIONING AND INSTALLATION OF THIS SYSTEM ARE SPECIFICALLY STUDIED FOR THIS SYSTEM IN ORDER TO INSURE PERFORMANCES AND A CORRECT FUNCTIONNING OF THE MODELS. THE USE OF OTHERS ACCESSORIES DIFFERENTS FROM THE ONES DISPLAYED IN THIS CATALOGUE IT MAY EFFECT OR/AND MAKE DANGEROUS THE FUNCTIONNING OF THE COMPONENT.</p>	

ISI YALITIM DEĞERLERİ (UF)
STATIC VALUES

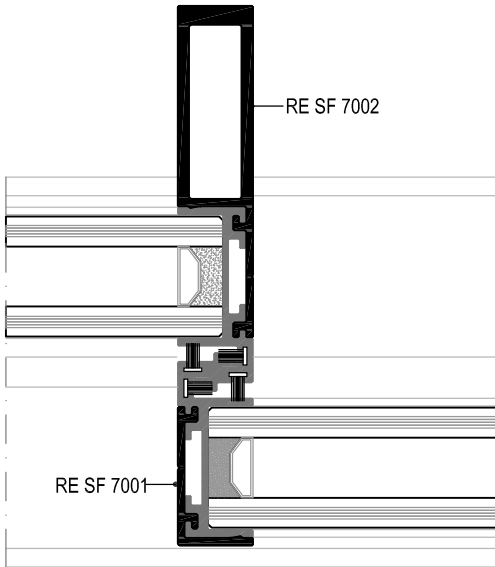
CAM KALINLIKLARI 32 MM
GLASS THICKNESS 32 MM



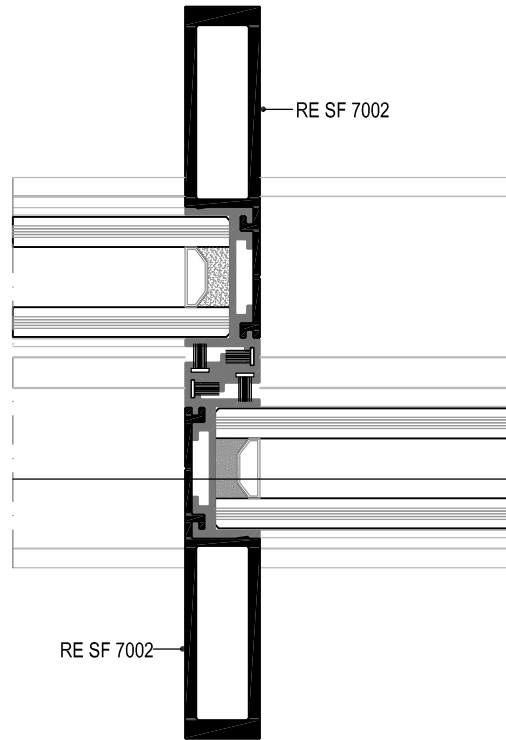
STATİK DEĞERLER
STATIC VALUES



STATİK DEĞERLER STATIC VALUES	
RE SF 7001	1,95 cm ⁴
RE SF 7001	1,95 cm ⁴
TOPLAM Jx TOTAL Jx	3,90 cm⁴

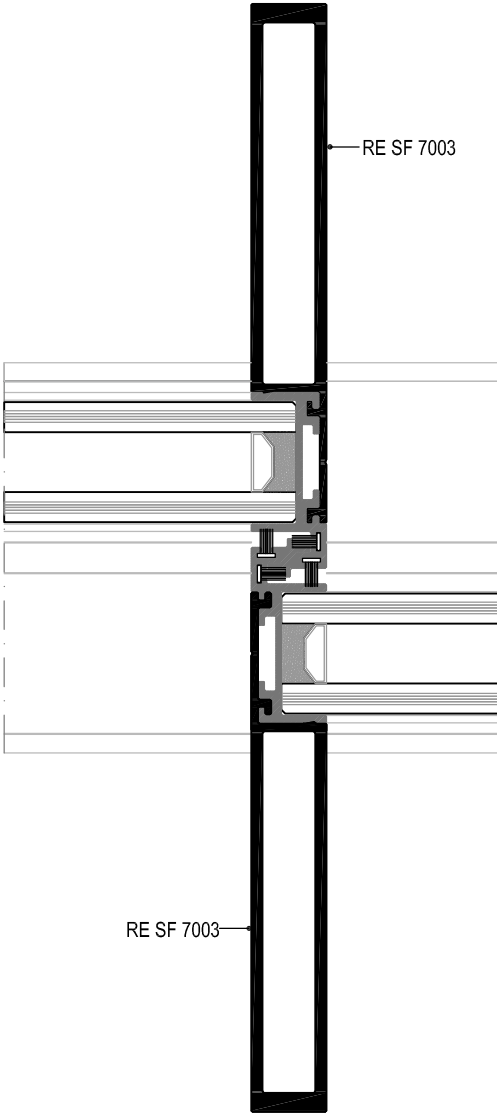
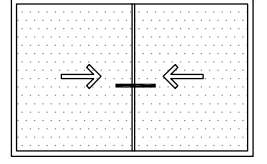


STATİK DEĞERLER STATIC VALUES	
RE SF 7001	1,95 cm ⁴
RE SF 7002	29,279 cm ⁴
TOPLAM Jx TOTAL Jx	31,229 cm⁴



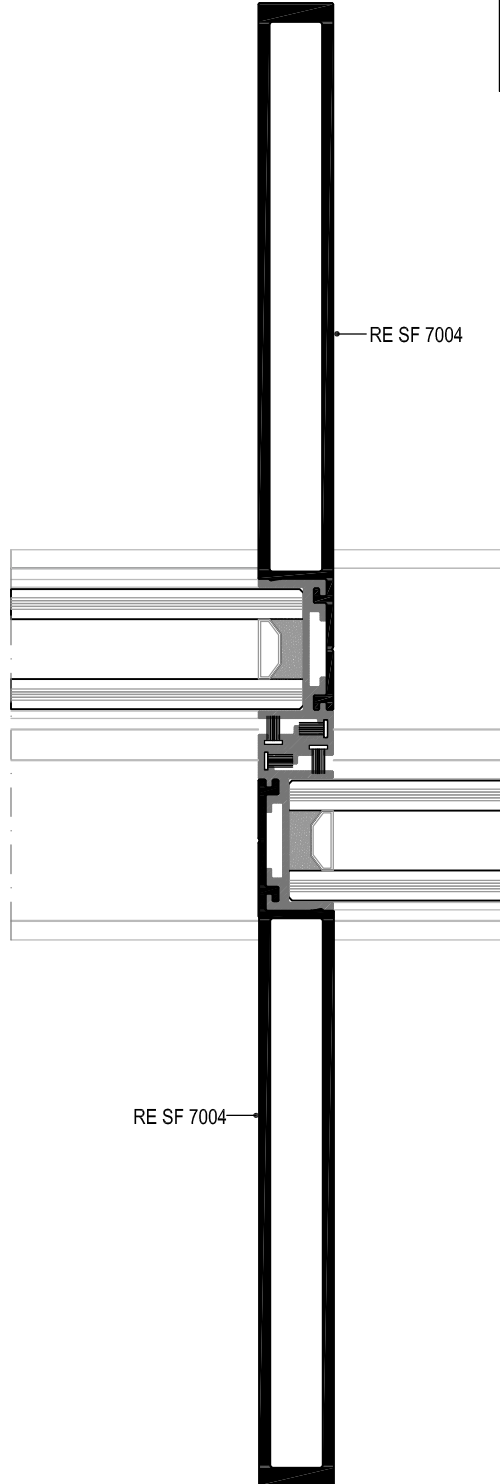
STATİK DEĞERLER STATIC VALUES	
RE SF 7002	29,279 cm ⁴
RE SF 7002	29,279 cm ⁴
TOPLAM Jx TOTAL Jx	58,558 cm⁴

STATİK DEĞERLER
STATIC VALUES



RE SF 7003

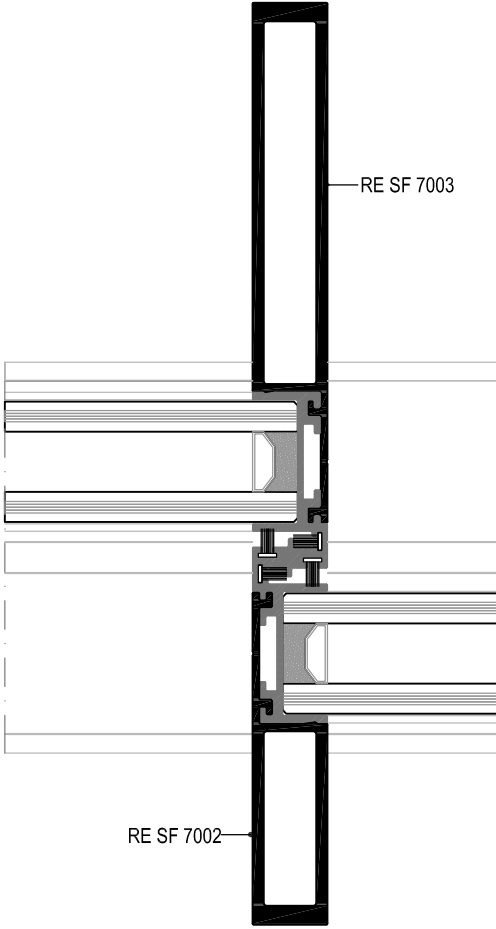
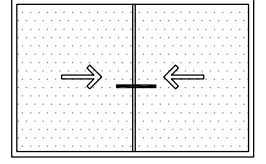
STATİK DEĞERLER STATIC VALUES	
RE SF 7003	118,175 cm ⁴
RE SF 7003	118,175 cm ⁴
TOPLAM Jx TOTAL Jx	236,350 cm⁴



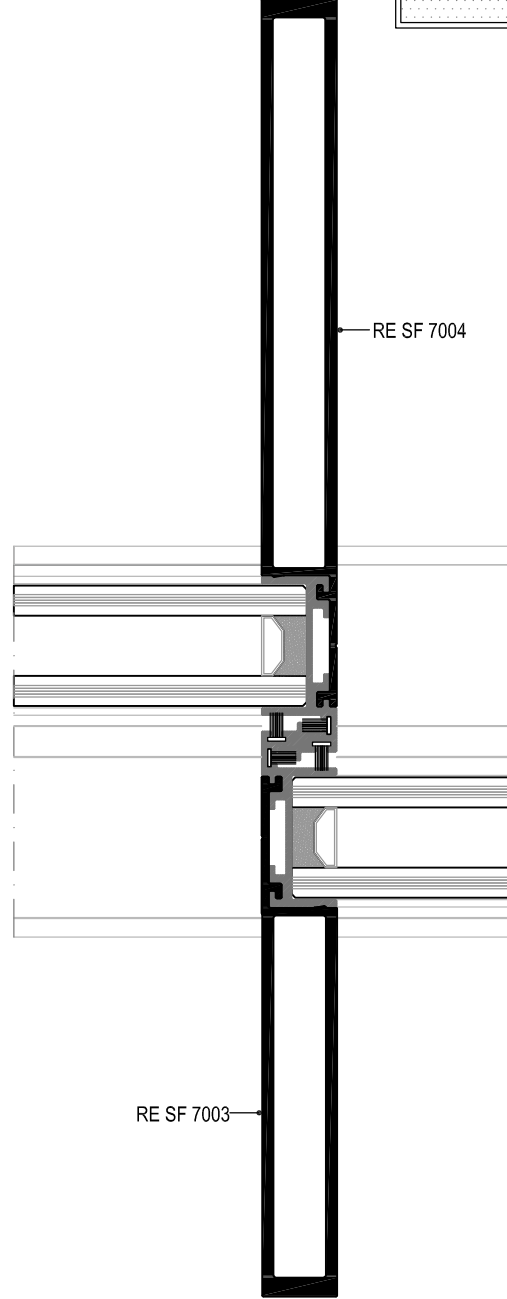
RE SF 7004

STATİK DEĞERLER STATIC VALUES	
RE SF 7004	307,093 cm ⁴
RE SF 7004	307,093 cm ⁴
TOPLAM Jx TOTAL Jx	614,186 cm⁴

STATİK DEĞERLER
STATIC VALUES

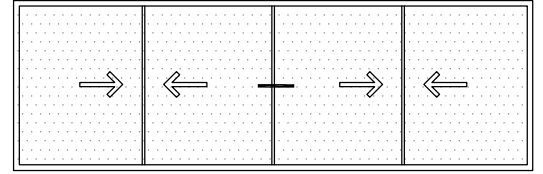
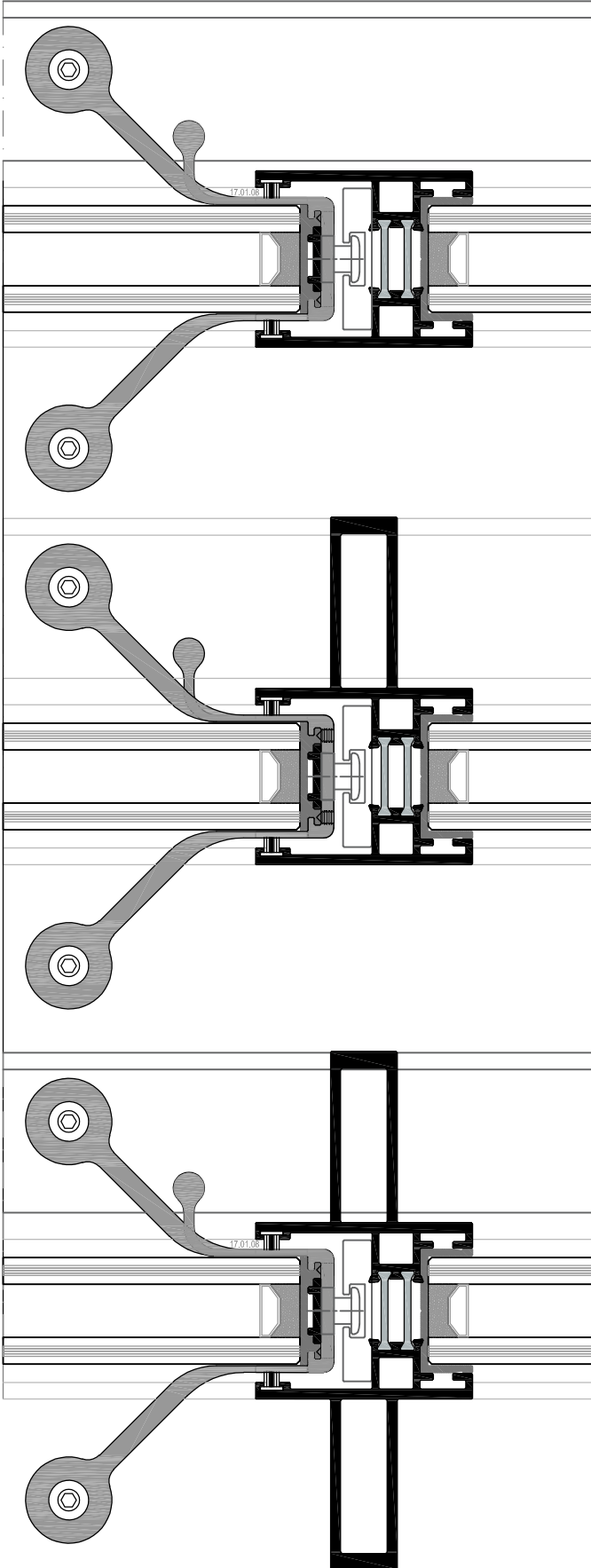


STATİK DEĞERLER STATIC VALUES	
RE SF 7002	29,279 cm ⁴
RE SF 7003	118,175 cm ⁴
TOPLAM Jx TOTAL Jx	147,454 cm⁴



STATİK DEĞERLER STATIC VALUES	
RE SF 7003	118,175 cm ⁴
RE SF 7004	307,093 cm ⁴
TOPLAM Jx TOTAL Jx	425,268 cm⁴

STATİK DEĞERLER
STATIC VALUES

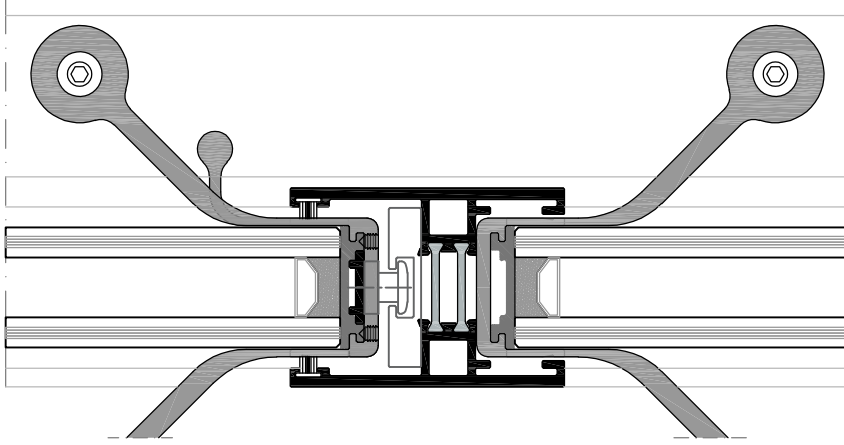
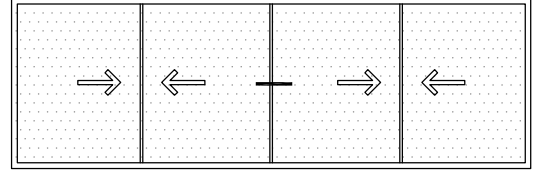


STATİK DEĞERLER STATIC VALUES	
ARESF4013	
TOPLAM Jx TOTAL Jx	23,372 cm ⁴

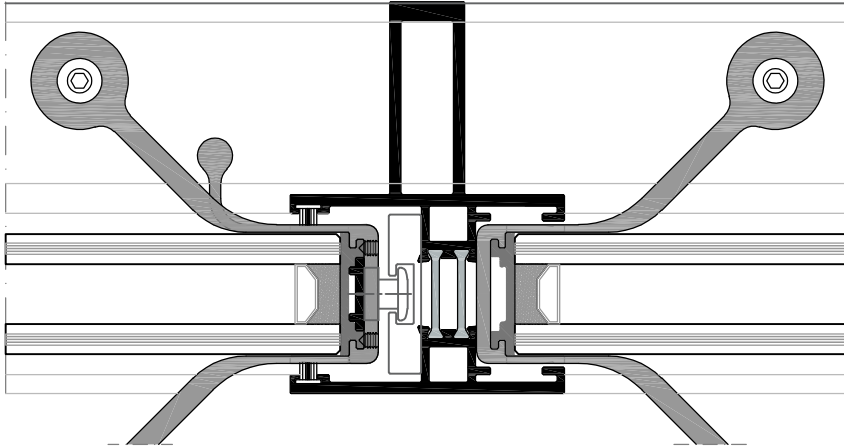
STATİK DEĞERLER STATIC VALUES	
ARESF4009	
TOPLAM Jx TOTAL Jx	87,296 cm ⁴

STATİK DEĞERLER STATIC VALUES	
ARESF4010	
TOPLAM Jx TOTAL Jx	219,290 cm ⁴

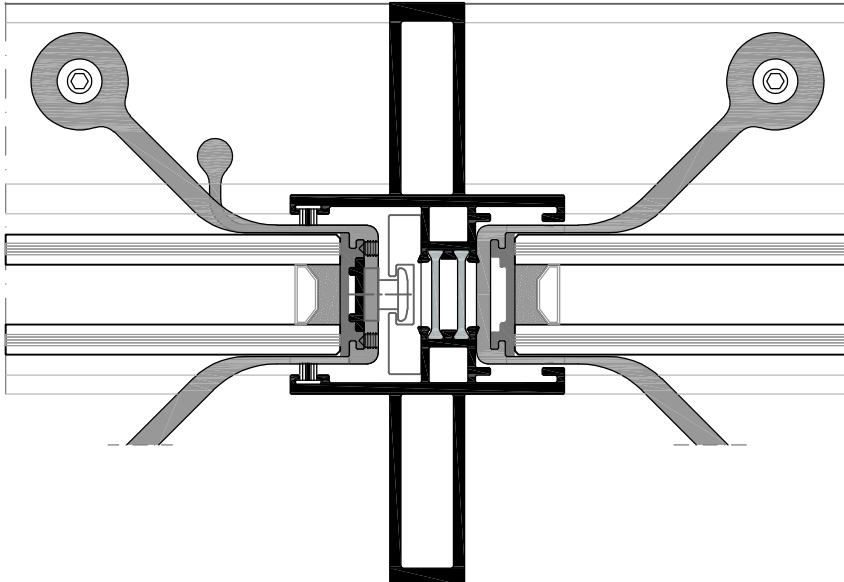
STATİK DEĞERLER
STATIC VALUES



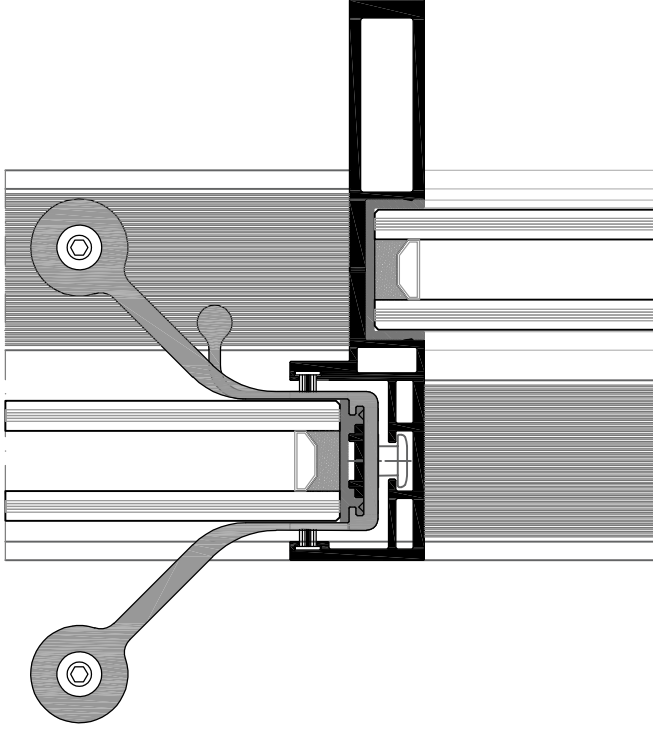
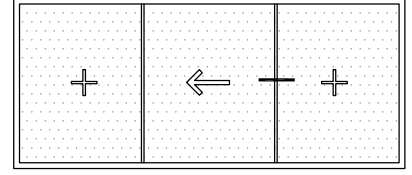
STATİK DEĞERLER STATIC VALUES		+
ARESF4014		
TOPLAM Jx TOTAL Jx	25,604 cm⁴	



STATİK DEĞERLER STATIC VALUES		+
ARESF4011		
TOPLAM Jx TOTAL Jx	90,985 cm⁴	

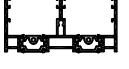
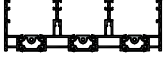















STATİK DEĞERLER STATIC VALUES		+
ARESF4012		
TOPLAM Jx TOTAL Jx	221,522 cm⁴	



STATİK DEĞERLER STATIC VALUES		+
RE SF 3001		
TOPLAM Jx TOTAL Jx	250,498 cm⁴	

PROFİL FİHRİSTİ / PROFILE FİHRIST

	PROFİL RESMİ DRAWING	PROFİL TANIMI PROFILE DESCRIPTION	RESCARA KODU RESCARA CODE	KALIP KODU MOLD CODE	AĞIRLIK (kg/m) WEIGHT (kg/m)	SAYFA PAGE
1		2 RAYLI KASA PROFİLİ 2 RAILED FRAME PROFILE	ARESF1001	A011903 A011904 A011903	2,534	C - 1
2		3 RAYLI KASA PROFİLİ 3 RAILED FRAME PROFILE	ARESF1002	A011903 A011904 A011904 A011903	3,620	C - 2
3		2 RAYLI ALT KASA PROFİLİ 2 RAILED SUB FRAME PROFILE	ARESF1101	A011992 A011993	1,449	C - 1
4		3 RAYLI ALT KASA PROFİLİ 3 RAILED SUB FRAME PROFILE	ARESF1102	A011993 A011994	1,905	C - 2
5		ALT KASA PROFİLİ SUB FRAME PROFILE	ARESF1105	A015807 A011993	2,163	C - 1
6		PERVAZ PROFİLİ SILL FINISHING PROFILE	RE SF4101	A011988	0,784	C - 8
7		ALT BİTİŞ PROFİLİ BOTTOM FINISHING PROFILE	RE SF4001	A011989	0,853	C - 8
8		KOL ADAPTÖR PROFİLİ HANDLE COVER PROFILE	RE SF4003	A011914	0,299	C - 8
9		KENAR BİTİŞ PROFİLİ SIDE FINISHING PROFILE	RE SF4004	A011908	0,616	C - 8
10		KENET PROFİLİ CENTRAL PROFILE	RE SF 7001	A011909	0,330	C - 3
11		TAKVİYELİ KENET PROFİLİ REINFORCED CENTRAL PROFILE	RE SF 7002	A011910	1,356	C - 3
12		TAKVİYELİ KENET PROFİLİ REINFORCED CENTRAL PROFILE	RE SF 7003	A011911	2,169	C - 3
13		TAKVİYELİ KENET PROFİLİ REINFORCED CENTRAL PROFILE	RE SF 7004	A011912	2,982	C - 3
14		4'LÜ SÜRME ORTA KİLİTLEME PROFİLİ LOCKING PROFILE FOR 4 SASH	ARESF4013	A015803 A015803	1,848	C - 4
15		4'LÜ SÜRME TAKVİYELİ KİLİTLEME PROFİLİ REINFORCED LOCKING PROFILE FOR 4 SASH	RE SF 4009	A015803 A015805	2,874	C - 6

MİMARİ KATALOG
ARCHITECTURAL CATALOGUE

Alüminyum Kapı Pencere ve Giydirme Cephe Sistemleri
Aluminium Window Doors and Facade Systems

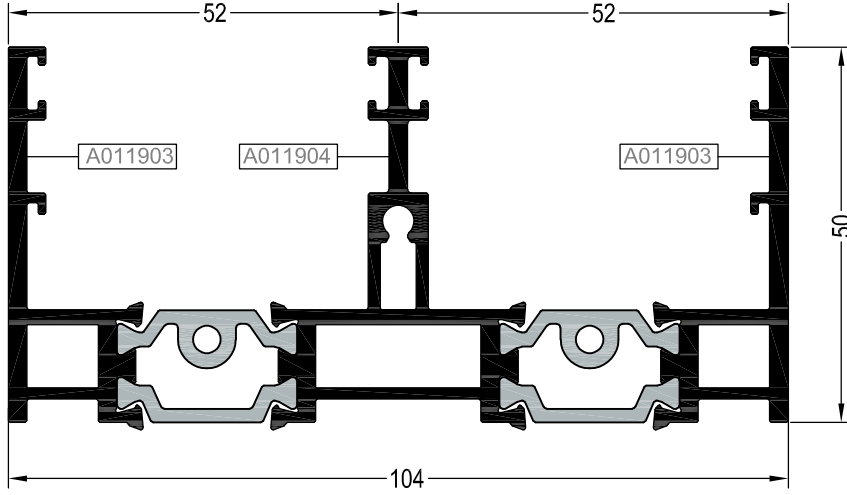


RESF32

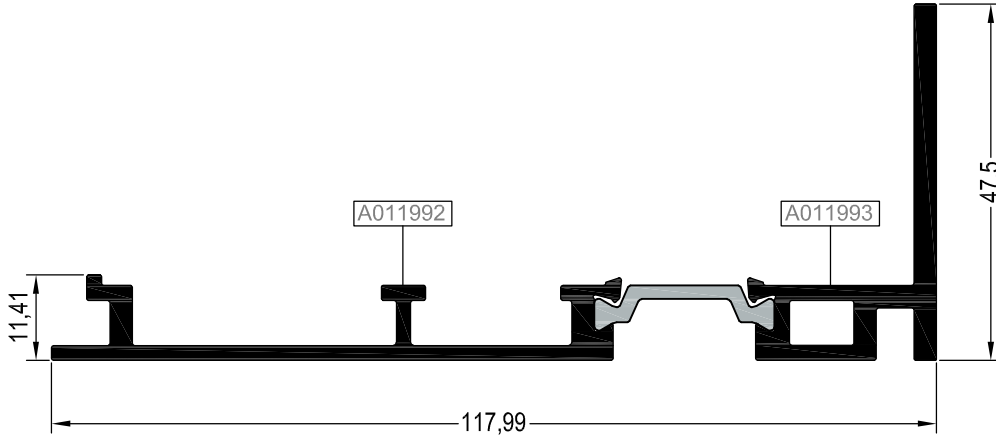
PROFİLLER

PROFILES

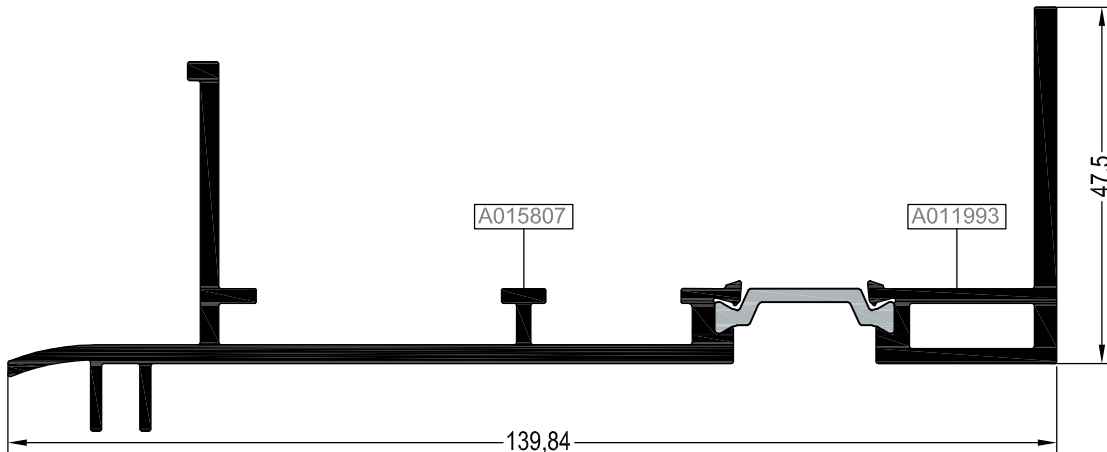
2 RAYLI SİSTEM KASA&ALT KASA PROFİLLERİ
FRAME & SUBFRAME PROFILES FOR 2 RAIL SYSTEM



ARESF1001		
AĞIRLIK WEIGHT (kg/m)	2,534	
MALZEME MATERIAL	Alüminyum	
UZUNLUK LENGHT (m)	6	
Jx (cm ⁴)	12,550	
Jy (cm ⁴)	103,608	

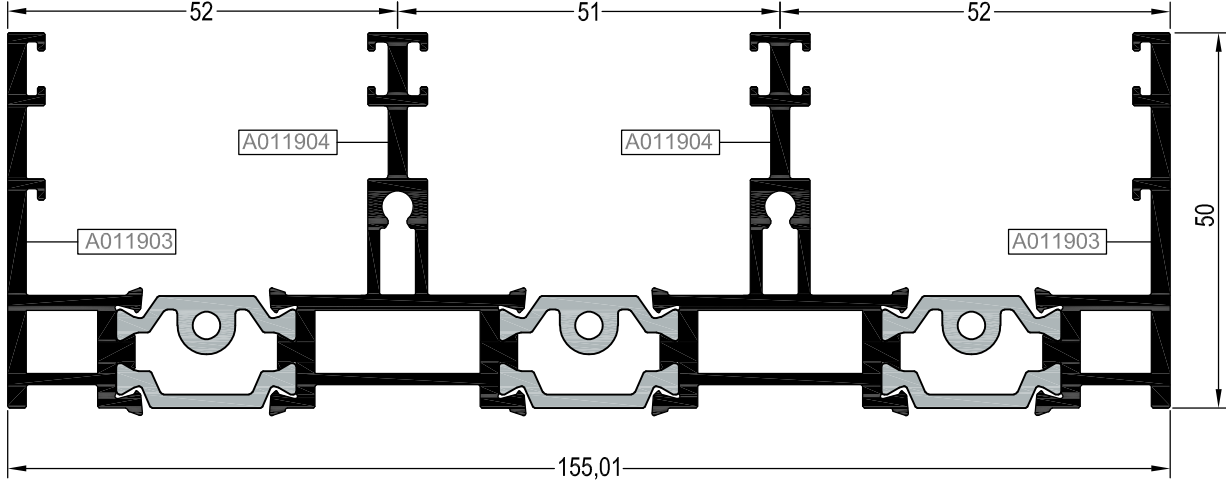


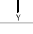
ARESF1101		
AĞIRLIK WEIGHT (kg/m)	1,449	
MALZEME MATERIAL	Alüminyum	
UZUNLUK LENGHT (m)	6	
Jx (cm ⁴)	5,341	
Jy (cm ⁴)	78,959	

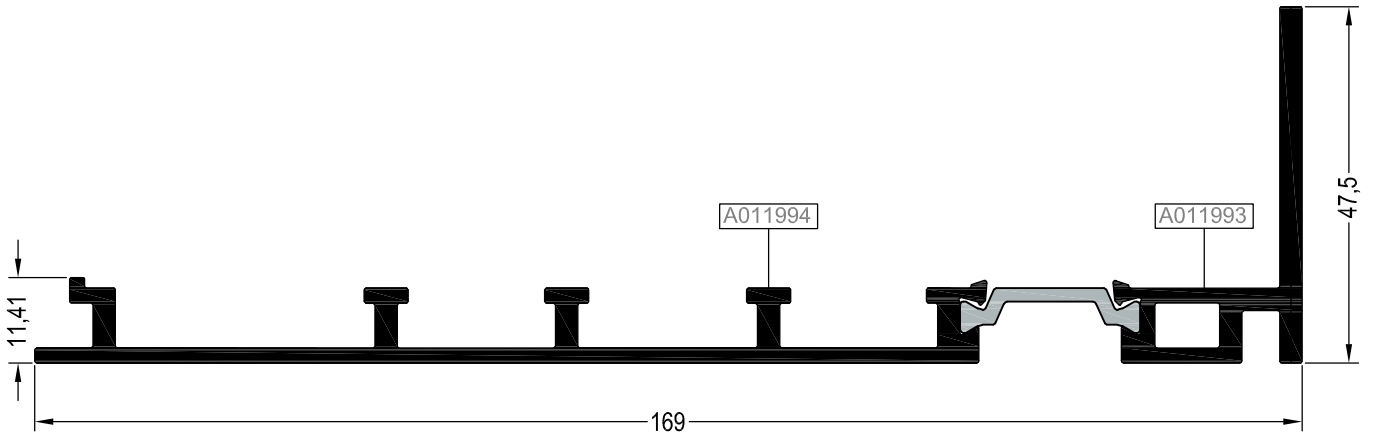


ARESF1105		
AĞIRLIK WEIGHT (kg/m)	2,163	
MALZEME MATERIAL	Alüminyum	
UZUNLUK LENGHT (m)	6	
Jx (cm ⁴)	8,246	
Jy (cm ⁴)	152,595	

3 RAYLI SİSTEM KASA&ALT KASA PROFİLLERİ
FRAME & SUBFRAME PROFILES FOR 3 RAIL SYSTEM




ARESF1002	
 AĞIRLIK WEIGHT (kg/m)	3,620
 MALZEME MATERIAL	Alüminyum
 UZUNLUK LENGHT (m)	6
 Jx (cm ⁴)	17,601
 Jy (cm ⁴)	289,137



ARESF1102	
 AĞIRLIK WEIGHT (kg/m)	1,905
 MALZEME MATERIAL	Alüminyum
 UZUNLUK LENGHT (m)	6
 Jx (cm ⁴)	5,850
 Jy (cm ⁴)	207,795

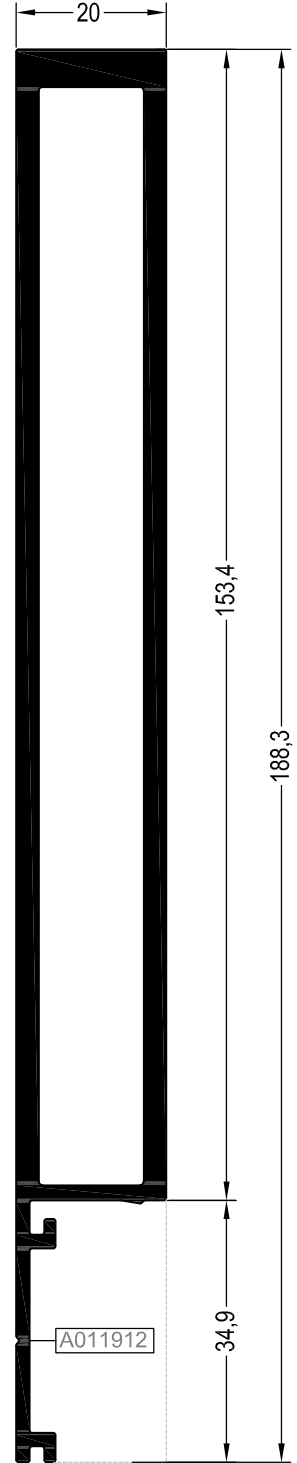
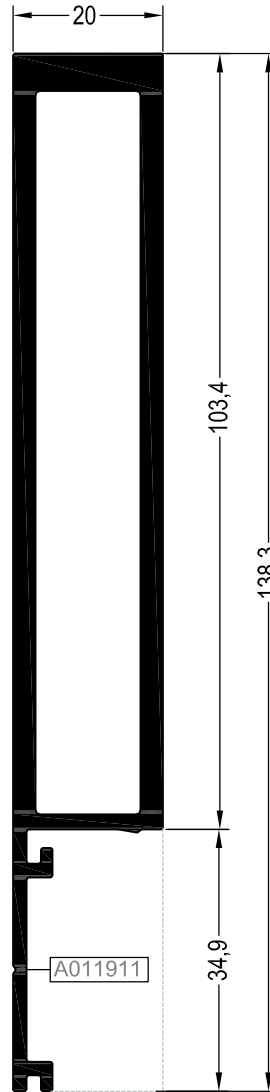
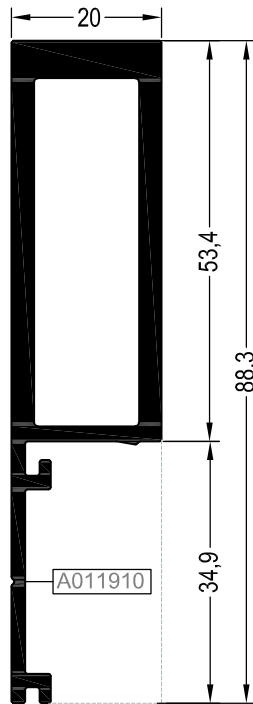
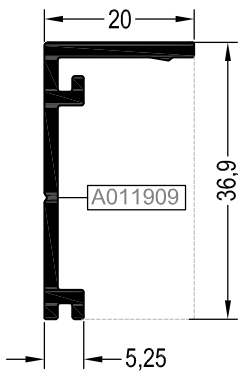
KENET PROFİLLERİ
CENTRAL PROFILES

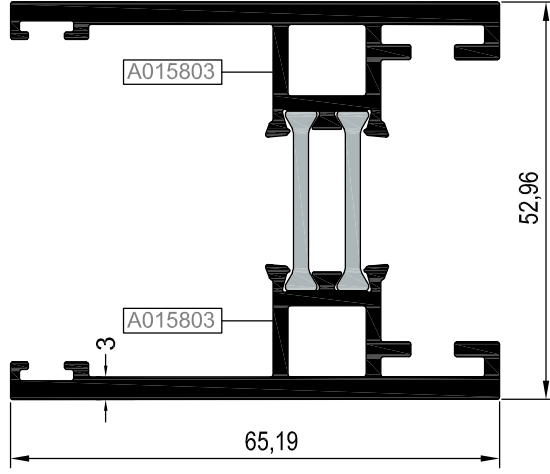
RE SF 7004		
	AĞIRLIK WEIGHT (kg/m)	2,982
	MALZEME MATERIAL	Alüminyum
	UZUNLUK LENGHT (m)	6
	Jx (cm ⁴)	307,093
	Jy (cm ⁴)	7,430

RE SF 7003		
	AĞIRLIK WEIGHT (kg/m)	2,169
	MALZEME MATERIAL	Alüminyum
	UZUNLUK LENGHT (m)	6
	Jx (cm ⁴)	118,175
	Jy (cm ⁴)	5,225

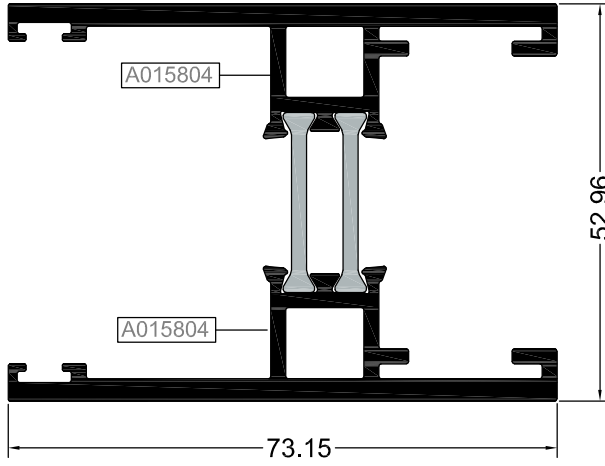
RE SF 7002		
	AĞIRLIK WEIGHT (kg/m)	1,356
	MALZEME MATERIAL	Alüminyum
	UZUNLUK LENGHT (m)	6
	Jx (cm ⁴)	29,279
	Jy (cm ⁴)	3,001






RE SF 7001		
	AĞIRLIK WEIGHT (kg/m)	0,330
	MALZEME MATERIAL	Alüminyum
	UZUNLUK LENGHT (m)	6
	Jx (cm ⁴)	1,950
	Jy (cm ⁴)	0,348



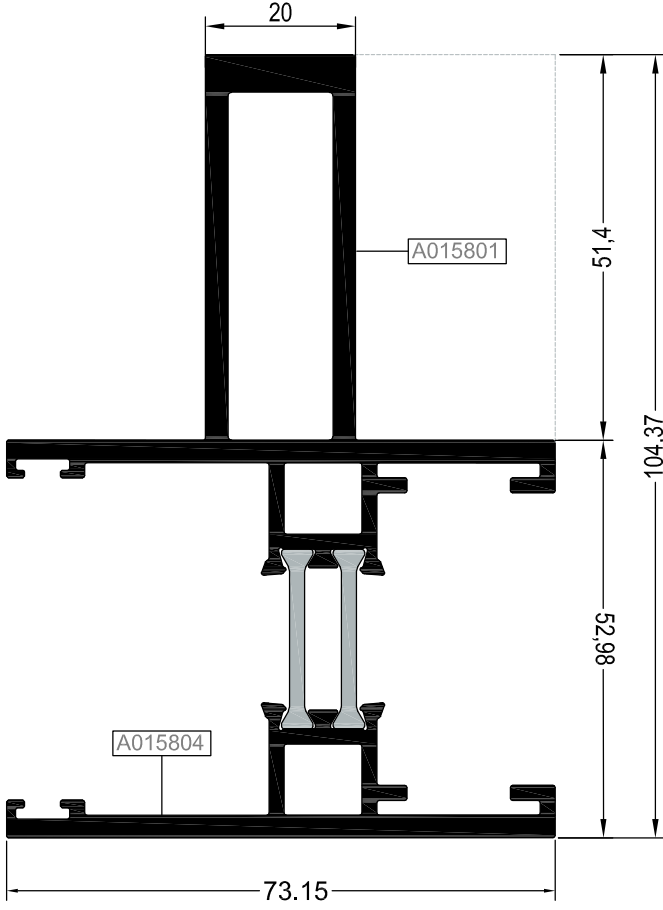
4LÜ SÜRME KİLİTLEME PROFİLLERİ
LOCKING PROFILES FOR 4 SASH

ARESF4013		
 AĞIRLIK WEIGHT (kg/m)		1,848
 MALZEME MATERIAL		Alüminyum
 UZUNLUK LENGHT (m)		6
 Jx (cm ⁴)		23,372
 Jy (cm ⁴)		19,251

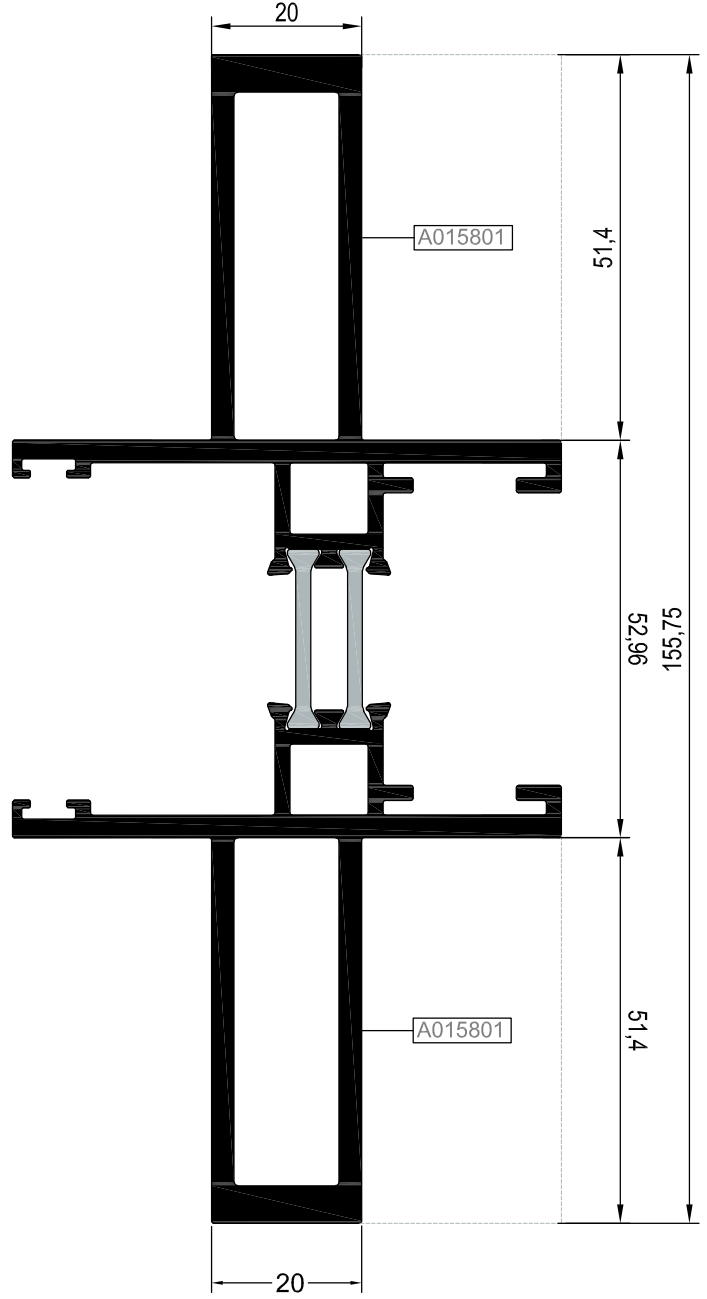






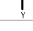
ARESF4014		
 AĞIRLIK WEIGHT (kg/m)		1,970
 MALZEME MATERIAL		Alüminyum
 UZUNLUK LENGHT (m)		6
 Jx (cm ⁴)		25,604
 Jy (cm ⁴)		25,081

4LÜ SÜRME TAKVİYELİ KİLİTLEME PROFİLLERİ
REINFORCED LOCKING PROFILES FOR 4 SASH

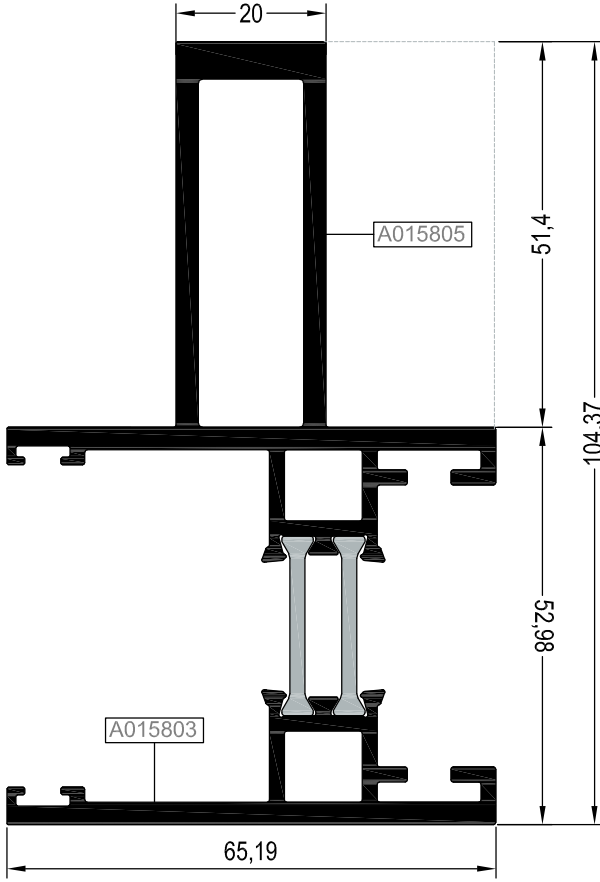





ARESF4011		
	AĞIRLIK WEIGHT (kg/m)	2,996
	MALZEME MATERIAL	Alüminyum
	UZUNLUK LENGHT (m)	6
	Jx (cm ⁴)	90,985
	Jy (cm ⁴)	27,668

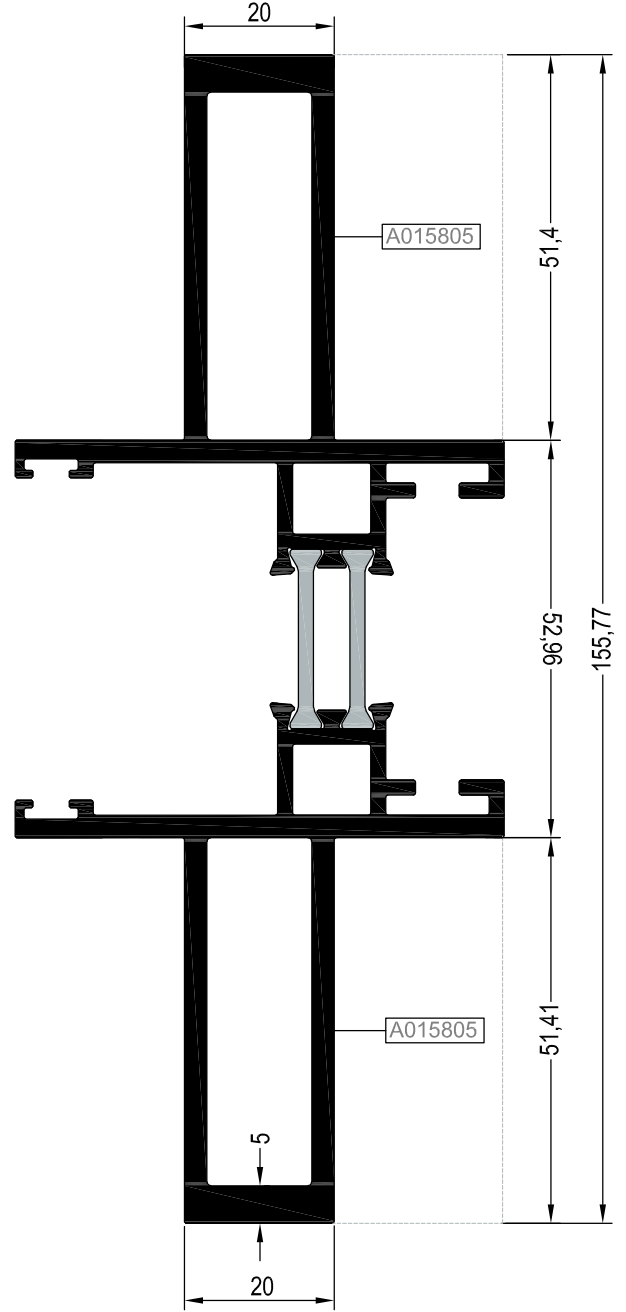






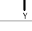
ARESF4012		
	AĞIRLIK WEIGHT (kg/m)	4,022
	MALZEME MATERIAL	Alüminyum
	UZUNLUK LENGHT (m)	6
	Jx (cm ⁴)	221,522
	Jy (cm ⁴)	30,138

4LÜ SÜRME TAKVİYELİ KİLİTLEME PROFİLLERİ
REINFORCED LOCKING PROFILES FOR 4 SASH

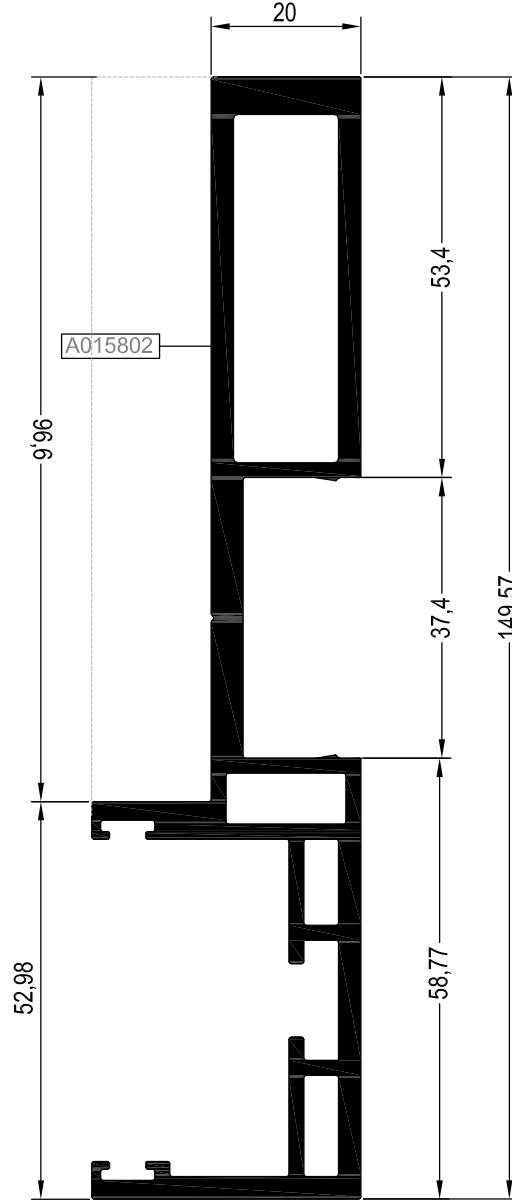





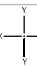
ARESF4009	
 AĞIRLIK WEIGHT (kg/m)	2,874
 MALZEME MATERIAL	Alüminyum
 UZUNLUK LENGHT (m)	6
 Jx (cm ⁴)	87,296
 Jy (cm ⁴)	22,086



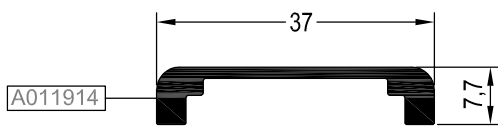
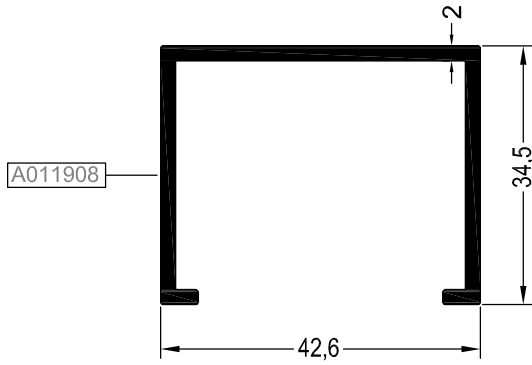
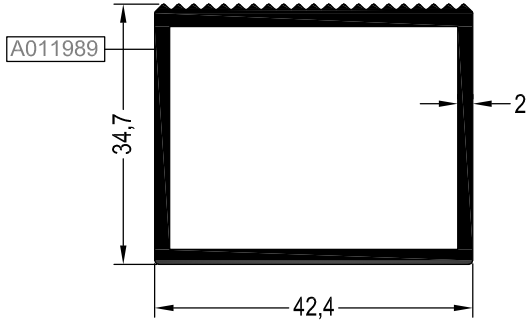
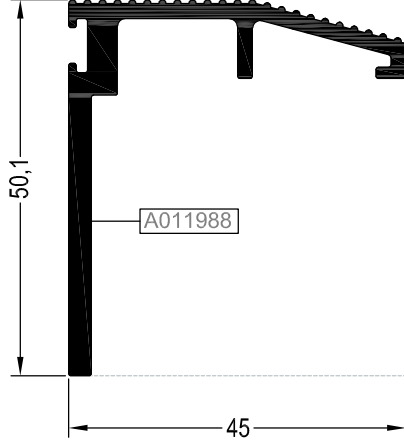
ARESF4010	
 AĞIRLIK WEIGHT (kg/m)	3,900
 MALZEME MATERIAL	Alüminyum
 UZUNLUK LENGHT (m)	6
 Jx (cm ⁴)	219,290
 Jy (cm ⁴)	24,664

ORTA KAYIT PROFİLİ
MULLION PROFILE



RE SF 3001		
	AĞIRLIK WEIGHT (kg/m)	2,952
	MALZEME MATERIAL	Alüminyum
	UZUNLUK LENGHT (m)	6
	Jx (cm ⁴)	250,498
	Jy (cm ⁴)	8,838

PERVAZ - BİTİŞ VE KOL ADAPTÖR PROFİLLERİ
SILL, SIDE, BOTTOM AND FINISHING PROFILES



RESF 4101

	AĞIRLIK WEIGHT (kg/m)	0,784
	MALZEME MATERIAL	Alüminyum
	UZUNLUK LENGHT (m)	6
	Jx (cm ⁴)	6,356
	Jy (cm ⁴)	5,510

RESF 4001

	AĞIRLIK WEIGHT (kg/m)	0,853
	MALZEME MATERIAL	Alüminyum
	UZUNLUK LENGHT (m)	6
	Jx (cm ⁴)	5,849
	Jy (cm ⁴)	7,786

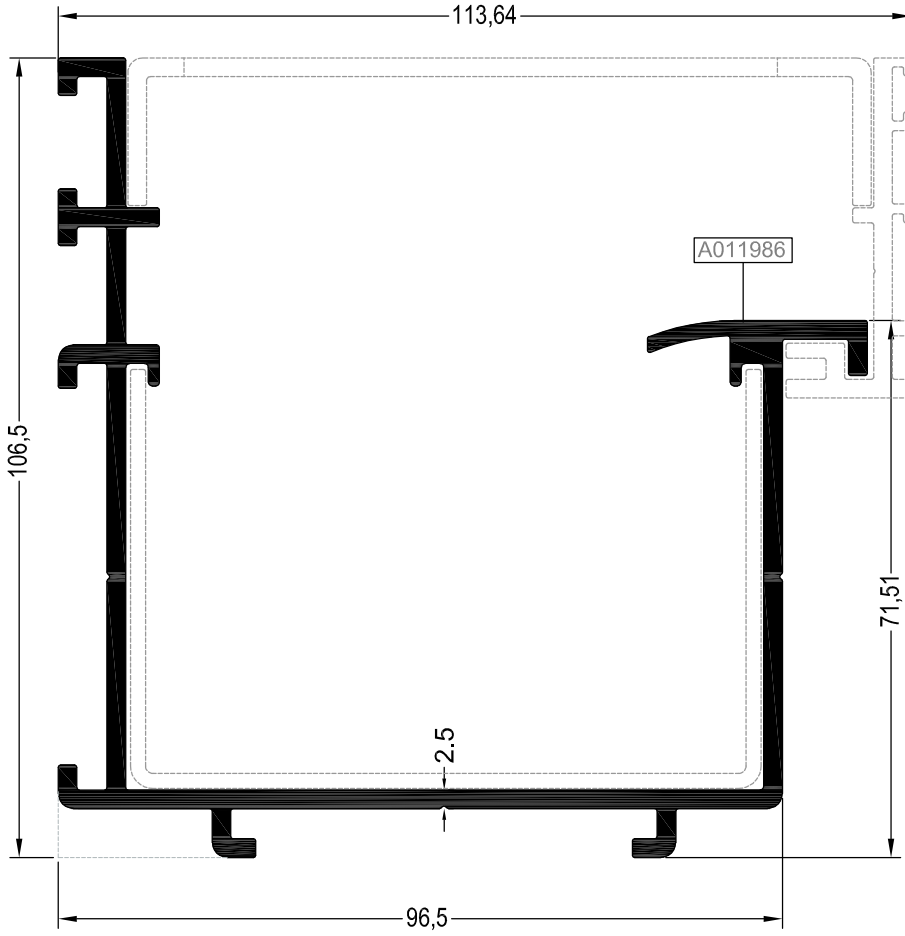
RESF 4004

	AĞIRLIK WEIGHT (kg/m)	0,616
	MALZEME MATERIAL	Alüminyum
	UZUNLUK LENGHT (m)	6
	Jx (cm ⁴)	3,231
	Jy (cm ⁴)	7,026

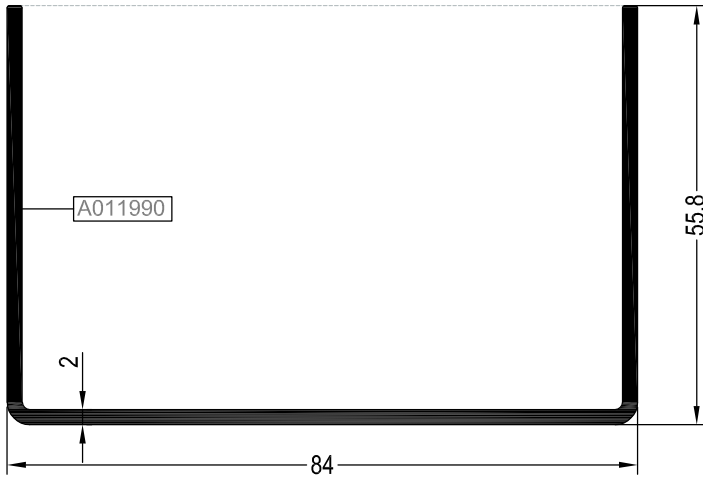
RESF 4003





	AĞIRLIK WEIGHT (kg/m)	0,299
	MALZEME MATERIAL	Alüminyum
	UZUNLUK LENGHT (m)	6
	Jx (cm ⁴)	2,023
	Jy (cm ⁴)	0,053

DRENAJ PROFİLLERİ
DRAINAGE PROFILES

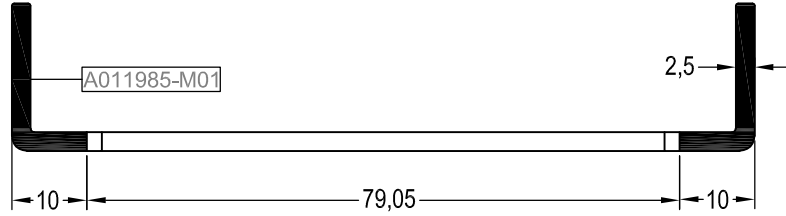


RE SF 9001		
 AĞIRLIK WEIGHT (kg/m)		2,410
 MALZEME MATERIAL		Alüminyum
 UZUNLUK LENGHT (m)		6
	Jx (cm ⁴)	92,145
	Jy (cm ⁴)	137,723

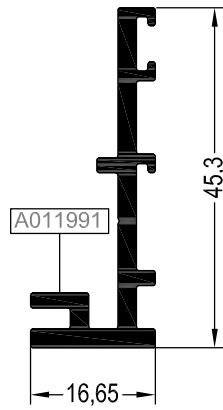


RE SF 9002		
 AĞIRLIK WEIGHT (kg/m)		1,029
 MALZEME MATERIAL		Alüminyum
 UZUNLUK LENGHT (m)		6
	Jx (cm ⁴)	12,450
	Jy (cm ⁴)	45,514

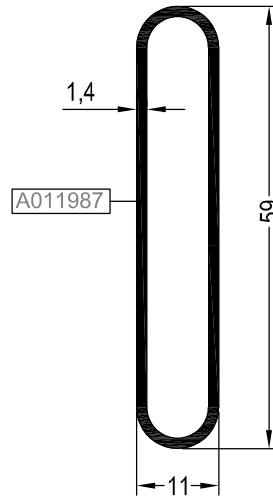
DRENAJ PROFİLLERİ
DRAINAGE PROFILES



RE SF 9003-M01		
	AĞIRLIK WEIGHT (kg/m)	0,544
	MALZEME MATERIAL	Alüminyum
	UZUNLUK LENGHT (m)	6
	Jx (cm ⁴)	—
	Jy (cm ⁴)	—

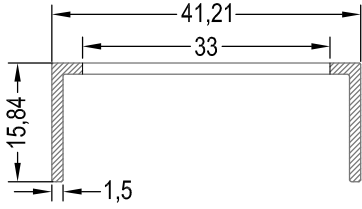


RE SF 9004		
	AĞIRLIK WEIGHT (kg/m)	0,529
	MALZEME MATERIAL	Alüminyum
	UZUNLUK LENGHT (m)	6
	Jx (cm ⁴)	4,052
	Jy (cm ⁴)	0,309

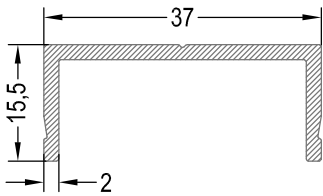
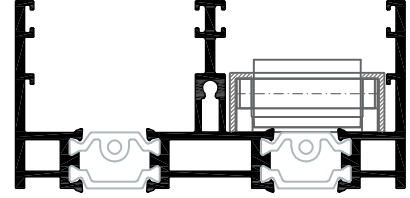



RE SF 9005		
	AĞIRLIK WEIGHT (kg/m)	0,480
	MALZEME MATERIAL	Alüminyum
	UZUNLUK LENGHT (m)	6
	Jx (cm ⁴)	0,362
	Jy (cm ⁴)	5,686

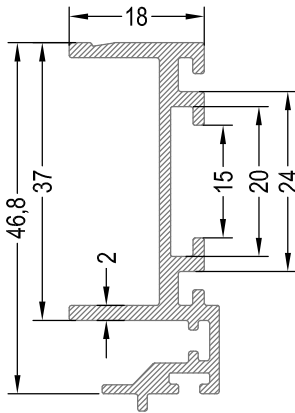
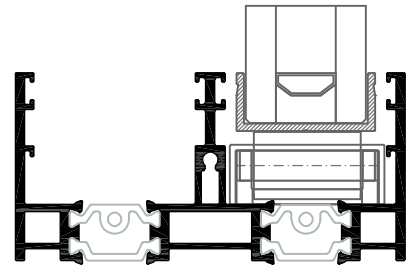
PVC PROFİLLER
PVC PROFILES



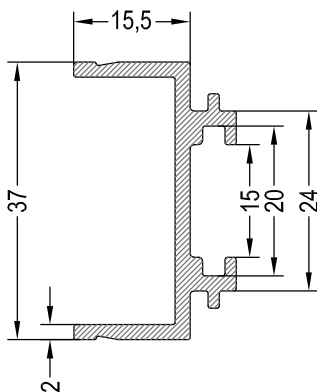
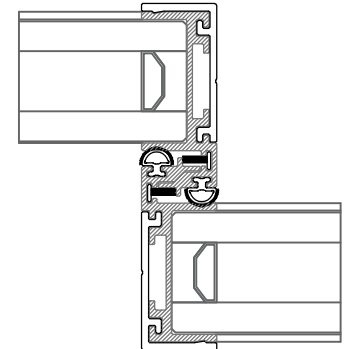
30.RES.02		
	UZUNLUK LENGHT (m)	6
	MALZEME MATERIAL	PVC



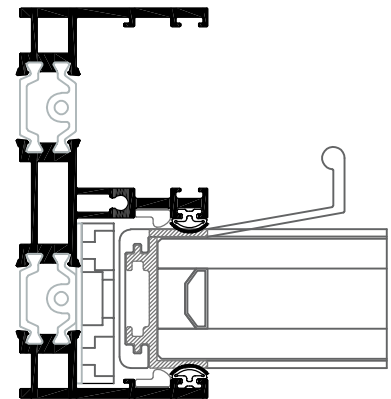
30.RES.01		
	UZUNLUK LENGHT (m)	6
	MALZEME MATERIAL	PVC



ARESF1001		
	UZUNLUK LENGHT (m)	6
	MALZEME MATERIAL	PVC



ARESF1001		
	UZUNLUK LENGHT (m)	6
	MALZEME MATERIAL	PVC



STOKTA BULUNAN SİSTEM PROFİLLERİNİN LİSTESİ (LIST OF SYSTEM PROFILES IN STOCK)

Nr			MIN. SİPARİŞ MİKTARI MIN. ORDER QUANTITY
ARES F1001	A011903	75 kg	225 kg
	A011904	75 kg	
	A011903	75 kg	
ARES F1002	A011903	75 kg	300 kg
	A011904	75 kg	
	A011904	75 kg	
	A011903	75 kg	
ARES F1101	A011992	75 kg	150 kg
	A011993	75 kg	
ARES F1002	A011994	75 kg	150 kg
	A011993	75 kg	
ARES F4002	A011913	75 kg	150 kg
	A011913	75 kg	
RE SF 8001	A011905	75 kg	
RE SF 4004	A011908	75 kg	
RE SF 7001	A011909	75 kg	
RE SF 7002	A011910	75 kg	
RE SF 7003	A011911	75 kg	
RE SF 4003	A011914	75 kg	
RE SF 4001	A011989	75 kg	

* STOKTA BULUNMAYAN TÜM PROFİLLER İÇİN MİNİMUM SİPARİŞ MİKTARI 300 KG'DİR.
MINIMUM ORDER QUANTITY FOR ALL THE PROFILES THAT ARE NOT IN STOCK IS 300 KG.